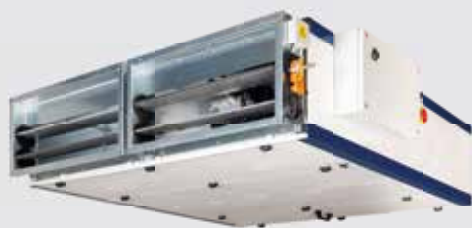


ZHK RECO

SPACE SAVING FLAT UNIT

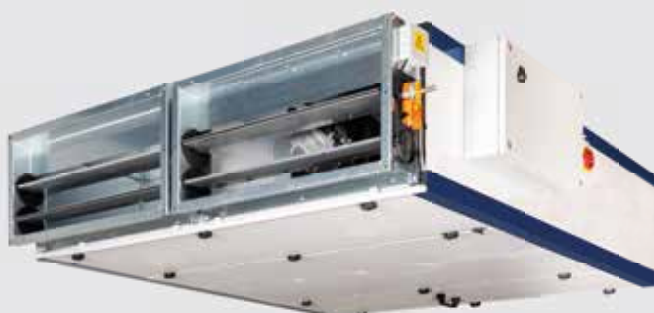


euroclima®
We care for better air



RECO 10

Airflow < 2.300 m³/h



RECO 20

Airflow 1.000-2.900 m³/h



RECO 30

Airflow 1.500-3.200 m³/h

SPACE-SAVING **CEILING UNITS**

MAIN ADVANTAGES

ZHK RECO

Based on the high-quality **Eurovent certified** ZHK INOVA unit casing, flat units with a total height of **420 mm or 505 mm** can be selected. The ZHK RECO is available with many additional options and the frameless design achieves T2/TB2 values.

The units can be **precisely designed for the operating point with the help of our selection software Aircalc++**. No oversizing or undersizing of the fans or heat exchangers is necessary. The use of fans with EC technology and counterflow plate exchangers enables low energy consumption. **50 mm panels** guarantee best acoustic and thermal performance.

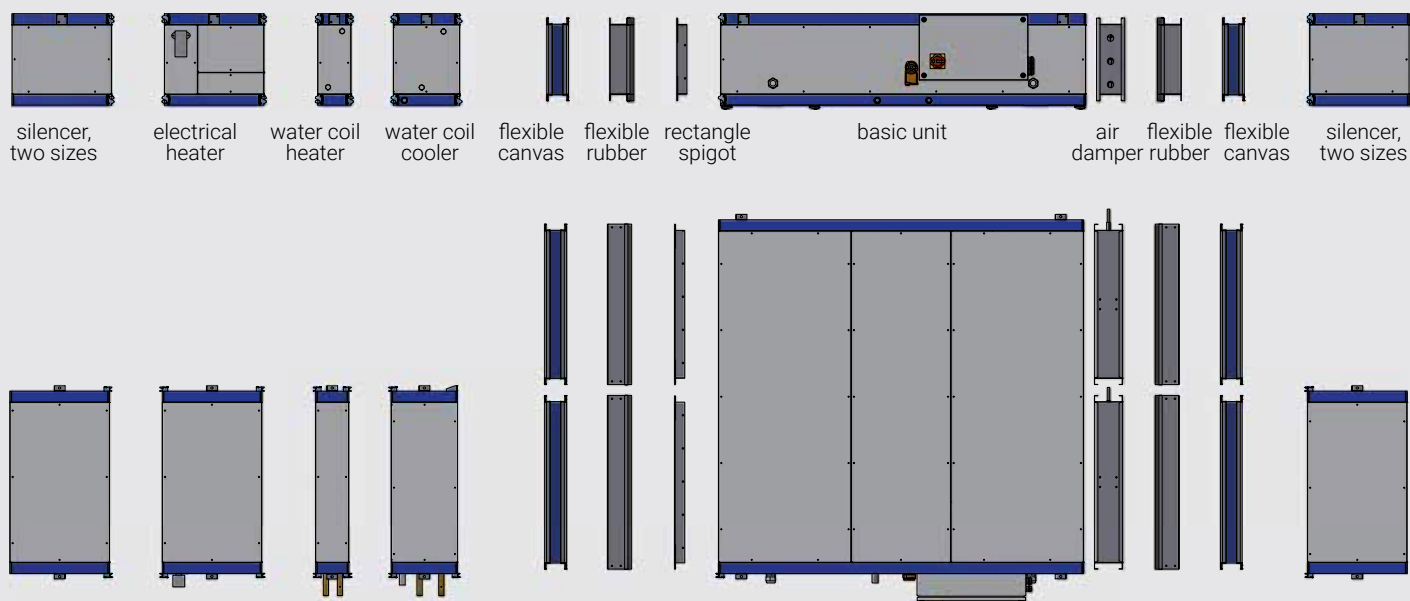


- » Easy assembly with easy connection
- » With EUROVENT certification
- » T2/TB2 as standard
- » Components can be adapted to normal operation
- » Compact design
- » Available with/without control system
- » Operation from below



LOW HEIGHT

THANKS TO COMPACT DESIGN



Unit size	airflow / ERP*	Airflowrange	Height	Width	Lenght
Basic Unit	[m³/h]	[m³/h]	[mm]	[mm]	[mm]
RECO 10	1.750	< 2.300	420	1.625	1.677,50
RECO 20	2.450	1.000 - 2.900	505	1.625	1.677,50
RECO 30	2.950	1.500 - 3.200	505	2.235	1.677,50

* 200Pa P_{EXT}

Unit size	Section length	RECO 10	RECO 20	RECO 30
Basic unit	[mm]	1.677,5	1.677,5	1.677,5
Damper	[mm]	130	130	130
Flexible connection	[mm]	100	100	100
Sound attenuator (S)	[mm]	457,5	457,5	457,5
Sound attenuator (L)	[mm]	762,5	762,5	762,5
Water heating	[mm]	152,5	152,5	152,5
E-heater	[mm]	457,5	457,5	457,5
Cooling	[mm]	305	305	305
Antivibration conn. frame	[mm]	110	110	110

ZHK RECO

OPTIONS

TECHNICAL SPECIFICATION

ZHK RECO

The ZHK RECO offers a wide range of options to meet the specific requirements of your air handling needs. Whether you're looking to optimize temperature control, reduce noise or ensure efficient airflow, these customizable options provide the versatility to adapt the system to various applications. **The unit is carefully engineered to enhance the overall performance and efficiency of your HVAC system**, allowing you to create the ideal indoor environment while maximizing energy savings and system longevity.

The unit casing is based on the Eurovent certified ZHK INOVA design. Self-supporting, frameless, modular panel construction and continuous aluminum profiles. The construction consists of a double-shell housing panel with a thickness of 50 mm, consisting of an inner cover and a removable outer cover, which are thermally separated by PVC plug-in profiles. Non-flammable mineral wool (fire protection class 0 according to ISO 1182.2 and A1 according to DIN 4102), which is ideal for sound and heat insulation, is used for unit insulation.

Casing data certified according to EN 1886 (MB ZHK INOVA):

- » Casing strength: class D1(M)
- » Casing air leakage at -400 Pa: class L1(M)
- » Casing air leakage at +700 Pa: class L1(M)
- » Thermal transmittance: class T2
- » Thermal bridging factor: class TB2



- » Heating Coil
- » Cooling Coil
- » Electric Heater
- » Damper
- » Sound Attenuator
- » Flexible connector



MINERAL WOOL
INSULATION



INTEGRATED
CONTROLS



HIGHLY EFFICIENT
COUNTERFLOW PLATE EXCHANGERS



ENERGY SAVING
SILENT FANS WITH EC MOTORS

ZHK RECO

We insert highest quality components only.



SMART DETAILED SOLUTIONS



Fan section

- » Plug fans with EC technology
- » High efficiency, low sound level

Filter section

- » Panel filter available M5, F7, F9
- » filter holding frame

Control unit

- » Complete control system in separate control box
- » Main switch for power supply
- » BMS & Cloud ready – Modbus IP as default integrated
- » All required sensors & actuators included
- » Large amount of additional optionals available

Silencer sections

- » Sound attenuator in two length

Connection fitting

- » Flexible canvas or anti vibration connection frame

Damper

- » Damper class C2

Plate heat exchanger

- » High efficient counter flow PHE with bypass
- » Stainless steel drain pan

Chilled water coils/ Warm water coil/dx coil and condenser coil

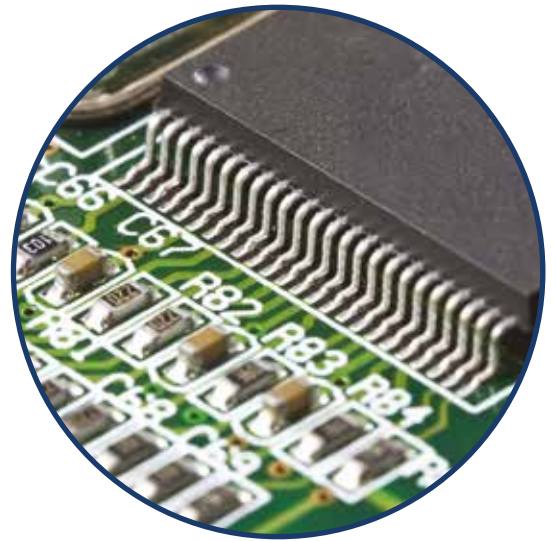


WE MAKE
AHU SMARTER

CONTROL SYSTEMS & REMOTE SUPPORT

Our Air Handling Units are available with **factory-mounted control**, including the corresponding protective functions. The **freely programmable control** and the control of the peripheral units such as the temperature and humidity sensor, pressure switches, damper actuators, valves, etc. are part of our scope of delivery. The AHU is completely wired and cabled and prepared for single point power supply. The unit is tested by **factory pre-commissioning**, which results in high reliability, time savings and trouble-free commissioning for our customers. Our ETA MATIC software is perfectly matched to the control types to be executed. **No programming knowledge is required** for commissioning. The software is loaded onto the controller using an SD card – no notebook necessary! All conceivable control strategies and parameters for operation are already included. Only the respective constellation of the Air Handling Unit is set. **Operation is via an external display**, which is used for commissioning and operation in a further step.

With the optional "**Climatix IC Cloud**" package, you get cloud access to the unit. With this access, our customers can access the unit from all over the world, at any time and from any smartphone, tablet, PC, etc. with internet access.



- » We only work with high-quality components (Siemens, Rittal, Wago...)
- » Control systems compatible with common building control systems
- » From quotation to commissioning from one source
- » Significant cost reduction – service operations can be optimised thanks to remote access
- » Quick troubleshooting & predictive maintenance
- » Value and data records over years
- » API service for simple connection to existing or new applications
- » Easiest connection thanks to the built-in IP interface of the Climatix controllers
- » Continual software updates and control via the cloud



PACKAGE UNIT

UNITS WITH INTEGRATED CONTROL



SERVICE

WORLDWIDE



EUROCLIMA CLIMATIX CLOUD

TEST-ACCOUNT

Production sites of Euroclima Group



Euroclima AG | SpA
St. Lorenzner Str. | Via S. Lorenzo 36
39031 Bruneck | Brunico (BZ)
ITALY
Tel. +39 0474 570 900
info@euroclima.com
www.euroclima.com



Euroclima Apparatebau Ges.m.b.H.
Arnbach 88
9920 Sillian
AUSTRIA
Tel. +43 (0) 48 42 66 61 -0
info@euroclima.at
www.euroclima.com



Euroclima Middle East
P.O.Box: 119870
Dubai
UNITED ARAB EMIRATES
Tel. +9714 802 4000
eumeinfo@euroclima.com
www.euroclima.com



Euroclima India Pvt Ltd.
Office no 501,505
Tropical new era business park
Opp. ESIC kamgar Hospital Road no -33
400604 Thane - Maharashtra
INDIA
Tel. +91 201 404 62
info@euroclima.in
www.euroclima.com



Bini Clima S.r.l.
Via A. Prato, 4 / A
38068 Rovereto
ITALY
Tel. +39 0464 437 232
info@biniclima.eu
www.biniclima.eu



Euroclima participates in the EPC
programme for Air Handling Units
(AHU) and Fan Coil Units (FCU); Check ongoing validity
of certificate: www.eurovent-certification.com



euroclima®
We care for better air